

The background of the slide is a vibrant blue with a dynamic splash of white milk in the foreground. The splash is captured in mid-air, with several droplets and a large, frothy base. The lighting creates soft shadows and highlights on the milk, giving it a three-dimensional appearance. Scattered throughout the blue background are several small, white, semi-transparent spheres of varying sizes, some of which appear to be floating or falling.

**Sharing  
SODIAAL vision**

# SODIAAL KEY FIGURES AND FACILITES FOODPRINT



13 200  
members



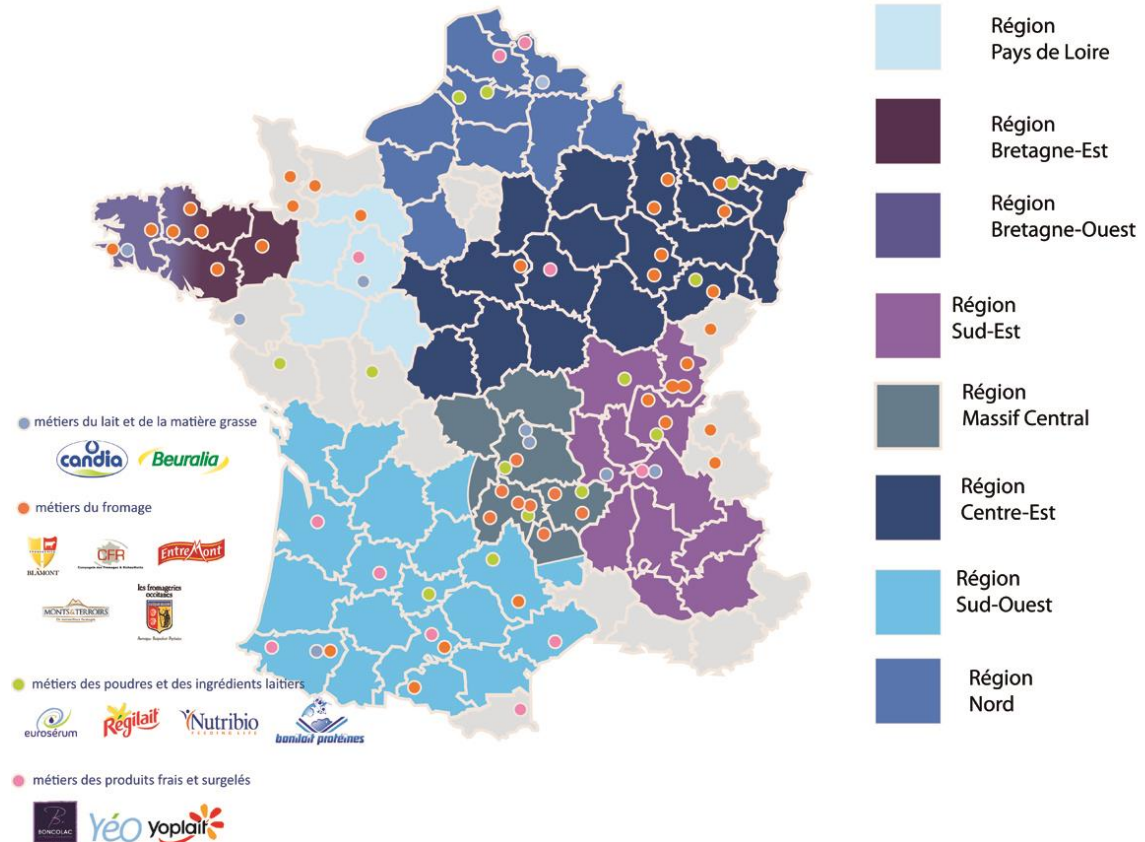
4,8 billion  
Litres of milk collected  
in 71 departments



> 5 billion €

Turnover

10 000  
employees



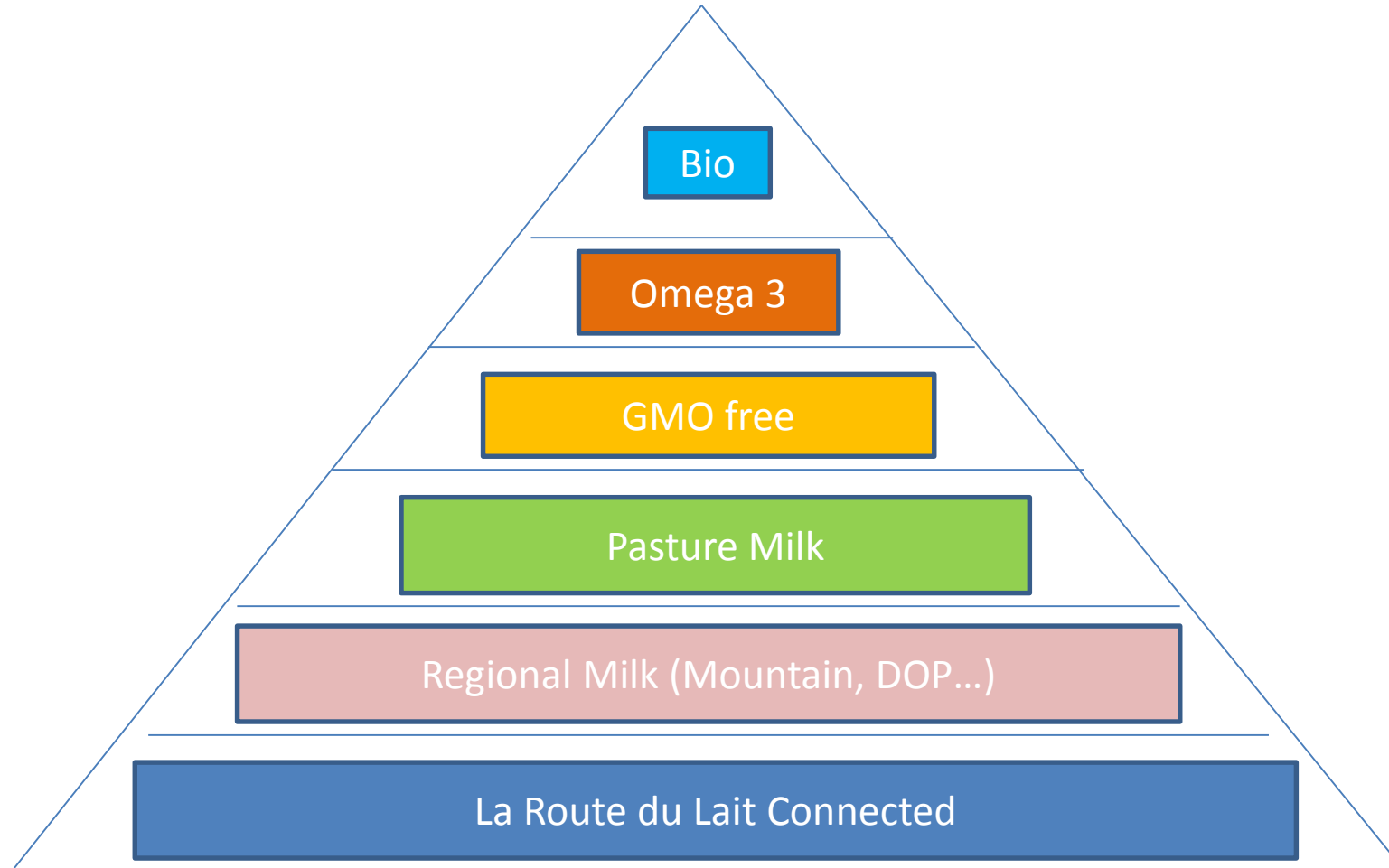
MAIN STRENGTH = OUR DIVERSITY



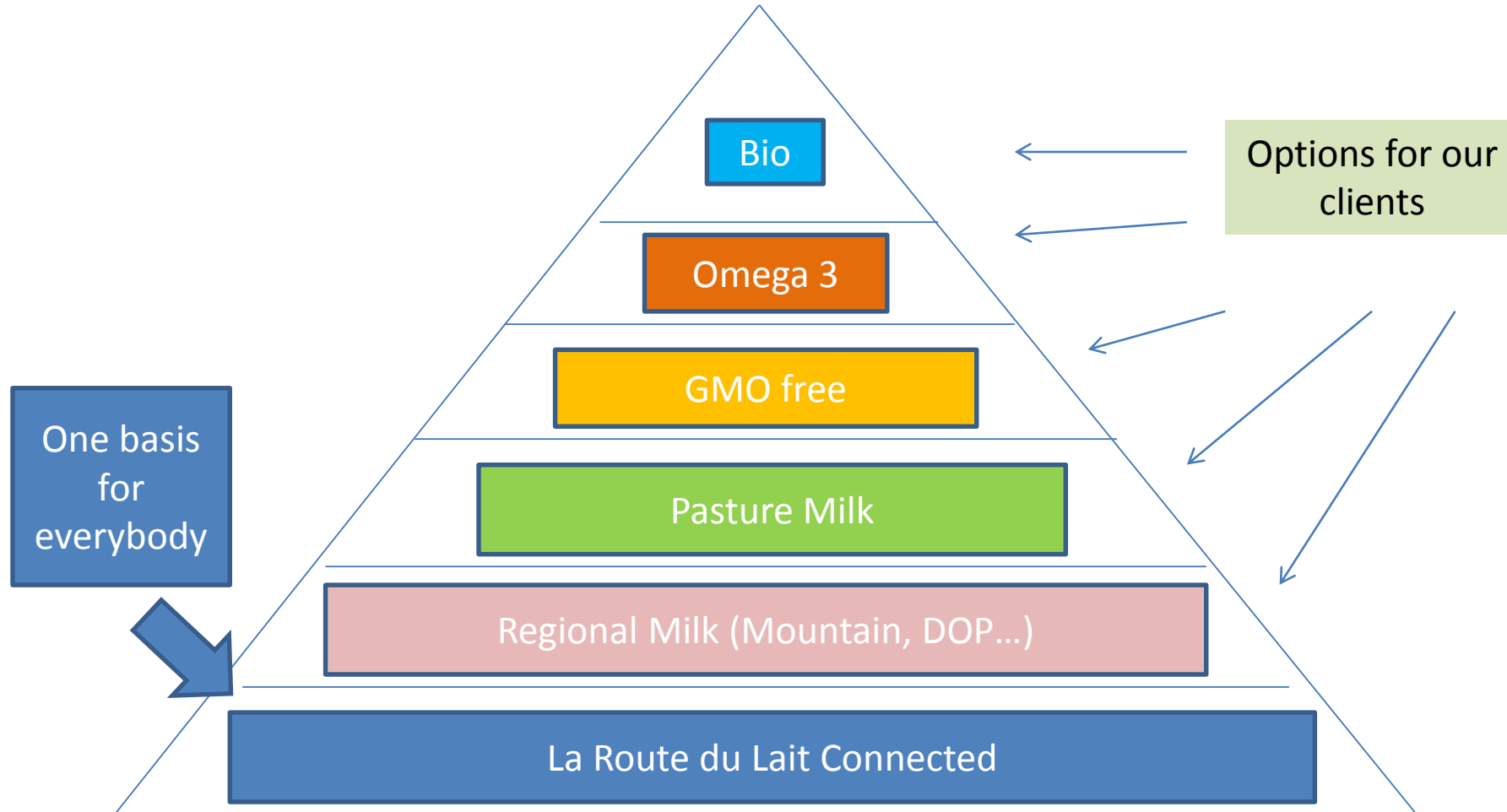
## Our vision for tomorrow

**One Milk** → **My Milk**

# Sodiaal's Milk



# Sodiaal's Milk



# Zoom on la Route du lait



64 questions

External audit each 3 years

3 steps

**La « Route du lait » will be next year based on an annual auto-diagnostic**

**With the new system, we will improve our transparency and our reactivity**

**We want to reduce the distance between our consumers and our farmers**