

atf

**animal
task
force**

A European Public-Private Partnership



EAAP

European Federation of Animal Science



LIVESTOCK ARE MORE THAN FOOD



© Animal Task Force / Inge Milou Krijger

4th one-day symposium of the Animal Task Force & the EAAP Commission on Livestock Farming Systems: *Livestock are more than food*

“Valorization of a waste from food industry. Bovine hide to leather”

Giacomo Zorzi

UNIC

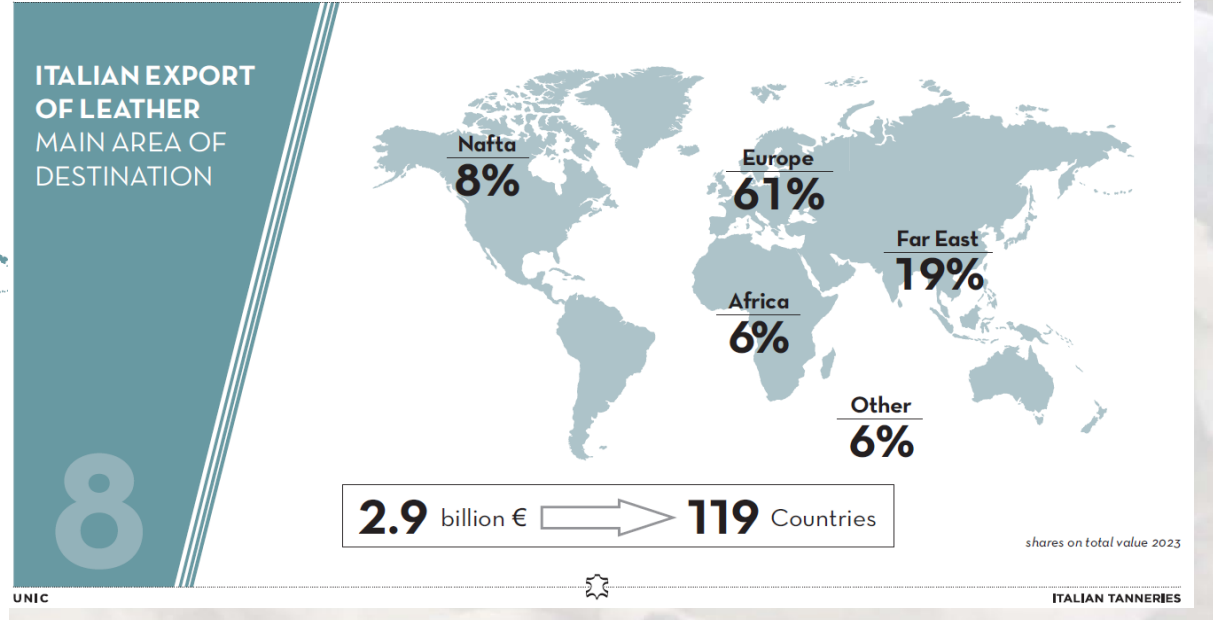
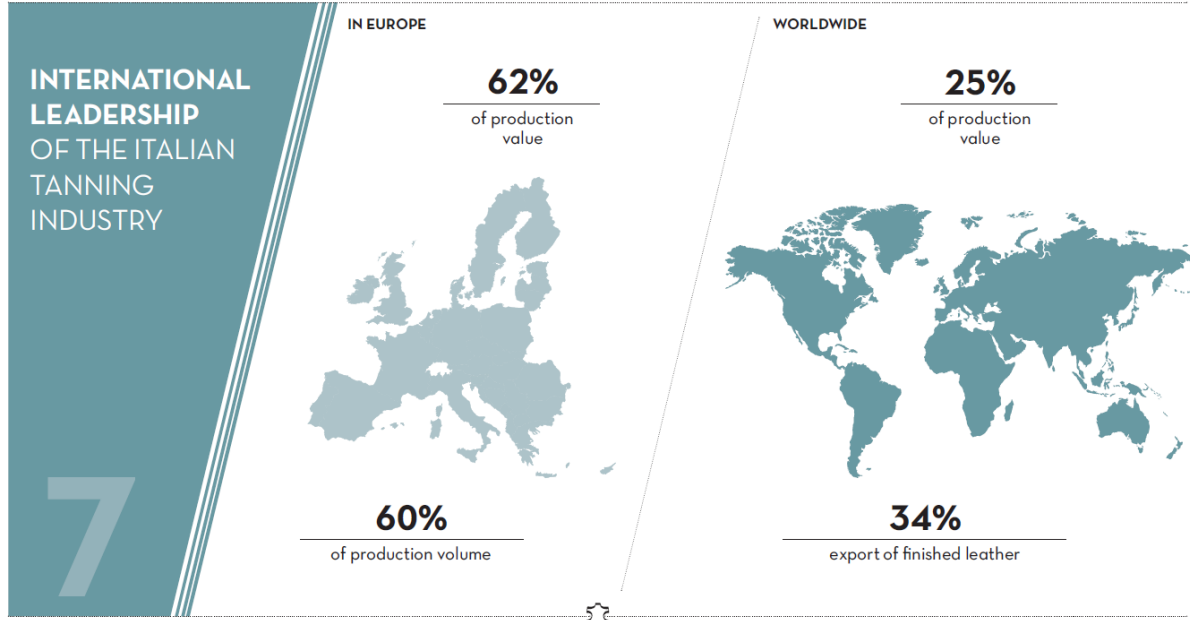
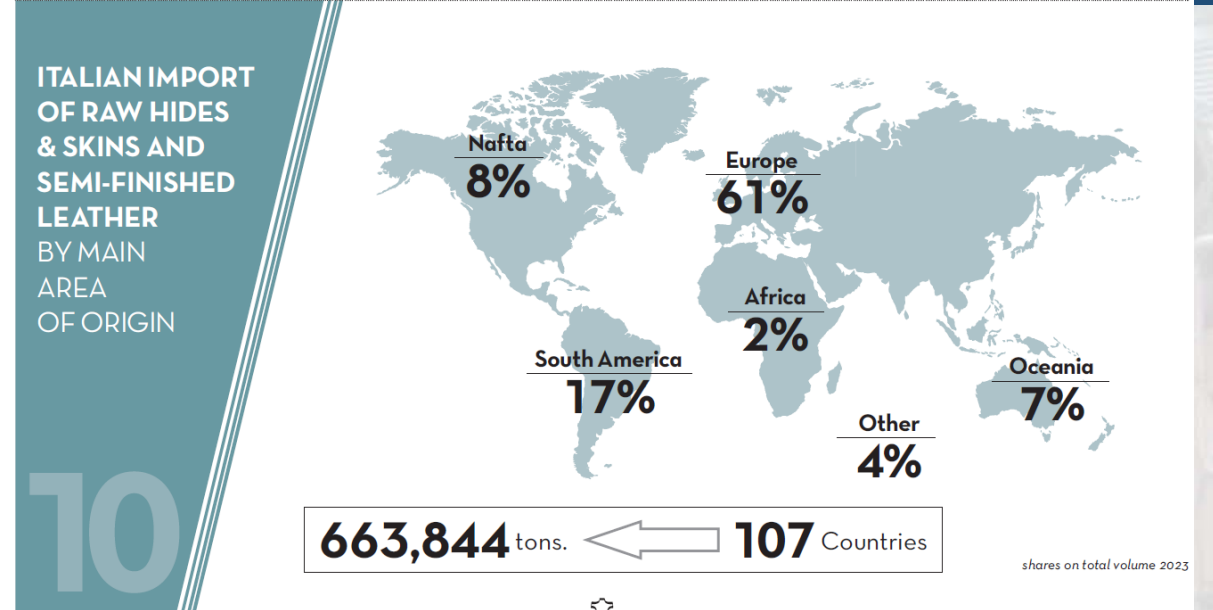
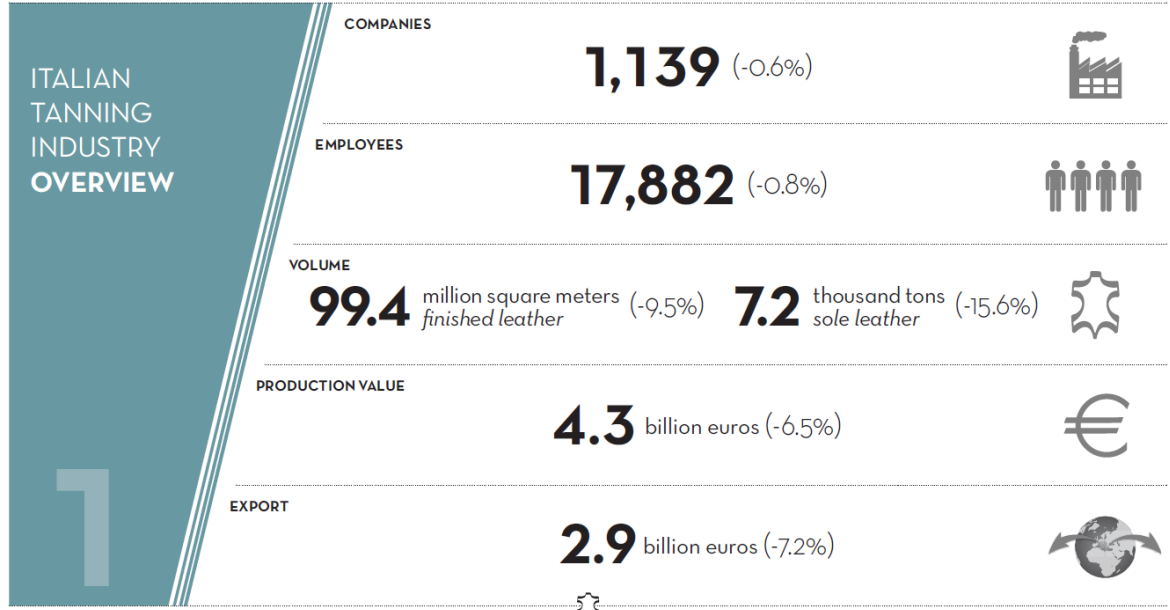


The **Italian Tanners' Association** is the most important association in the world for tanning companies.

It has been protecting its associate companies since 1946 and represents a strategic industry, which is a fundamental component of Italy's manufacturing and economic fabric.

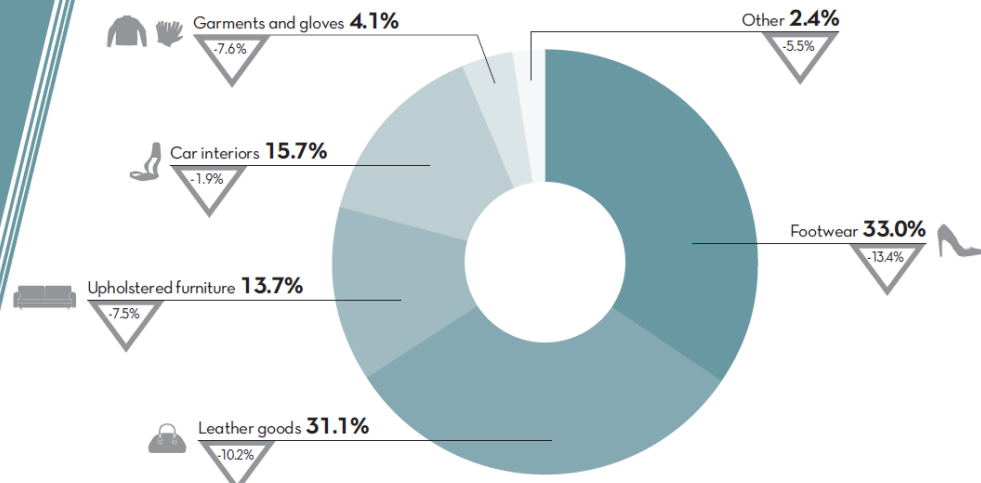
It promotes the interests of the sector, it represents it on every level, boosts innovation, enhances both its social and environmental role and sets up commercial companies that are functional to the sectorial market.

It is a member of Confindustria, Cotance the European Confederation of Tanners and ICT the International Council of Tanners.



PRODUCTION BY DESTINATION USE

4

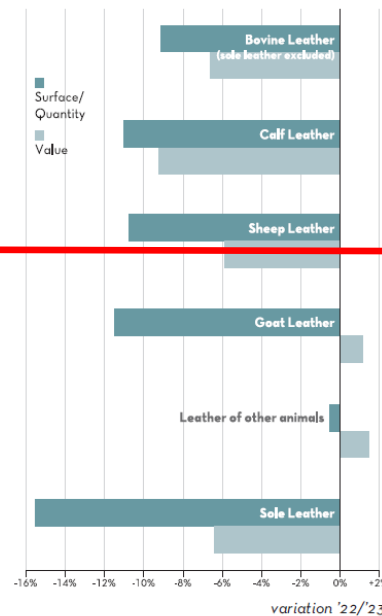


shares on total volume 2023 and variation '22/'23

PRODUCTION BY ANIMAL TYPOLOGY

3

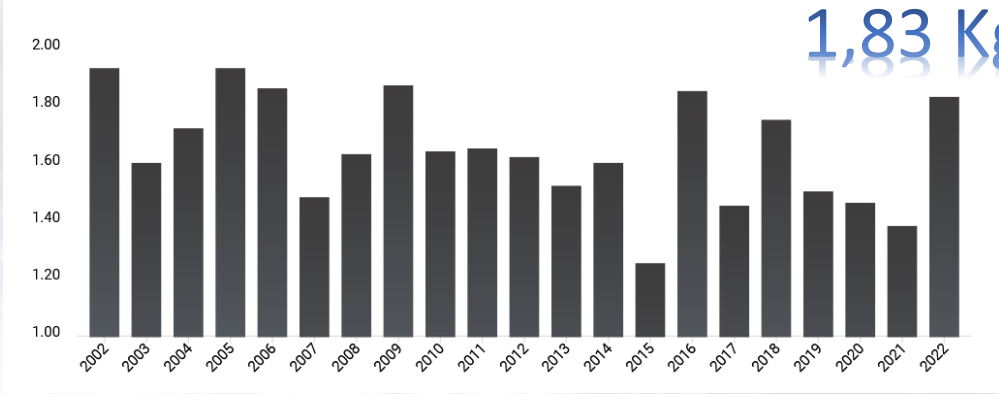
	2023	
	Volume (000 000 sqm)	Value (million euros)
Bovine Leather	75.8	3,106.2
Calf Leather	7.3	436.3
Sheep Leather	9.3	301.8
Goat Leather	6.6	216.9
Leather of other animals	0.5	101.4
SUBTOTAL	99.5	4,162.5
Sole leather (tons)	7,205	102.4
TOTAL		4,264.9



Animal by Product 99,5%

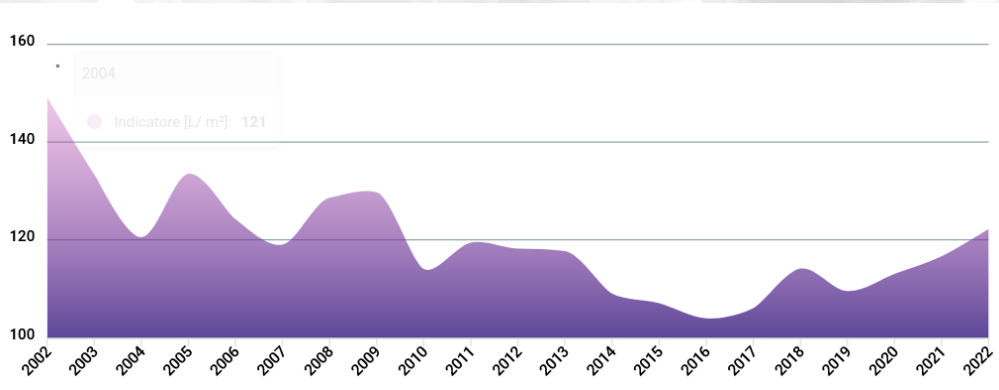
This is the very first fact. Beyond it exist a fascinating world made of daily efforts to contribute as best as possible to circularity and sustainability.

Wastes produced – Kg/m²



78% are recovered

Water consumption – L/m²



Consumption of water and chemicals

Water consumption



116.6 l/m²

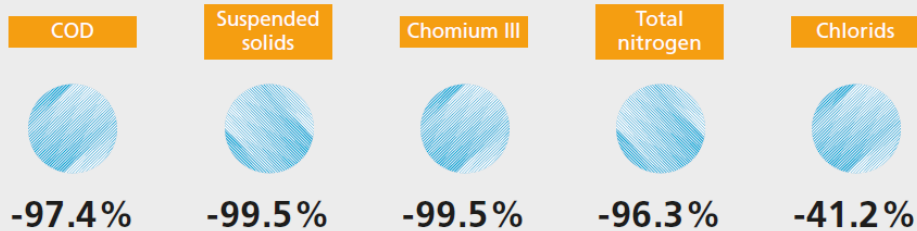
Chemicals consumption



2.10 kg/m²

Reduction of pollutants in wastewater

(weighted average of treatment plants in Tuscany and Veneto)



SDG Target 6.3

By 2030, improve water quality by reducing pollution, eliminating dumping and minimizing release of hazardous chemicals and materials, halving the proportion of untreated wastewater and substantially increasing recycling and safe reuse globally

SDG Indicator 6.3.1

Proportion of domestic and industrial wastewater flow safely treated

In tanned leather the content of **bio-based carbon** varies between 65% and 98% depending on the type of processing carried out, unlike "alternative to skin" materials, bio-based origin declarants, where the majority of the component comes from fossil sources.

Biodegradable and Compostable

ISO 20136



Tanneries, serving leather market, guarantee raw hides are not sent to landfill disposal. Every year world tanneries produce a total of about 1,700 sq km of finished leather (equivalent to 8 million tons of raw hides). The disposal as waste would produce 5 million tonnes of greenhouse gases. (estimates based on UNIDO data).

CO_2 absorbed = CO_2 emitted

\neq

CO_2 absorbed = 0 and CO_2 emitted = 100%

Besides the relevance of waste prevention for related environmental problems, another current topic regards the rise of synthetics and fake leather. Replacing natural leather with synthetics will not stop animals from being processed to make meat and milk. But mainly technical and environmental performances are not at all comparable.



Thanks

g.zorzi@unic.it

www.unic.it

