

Animal Production, the *Key* in a European Sustainable Circular Bioeconomy

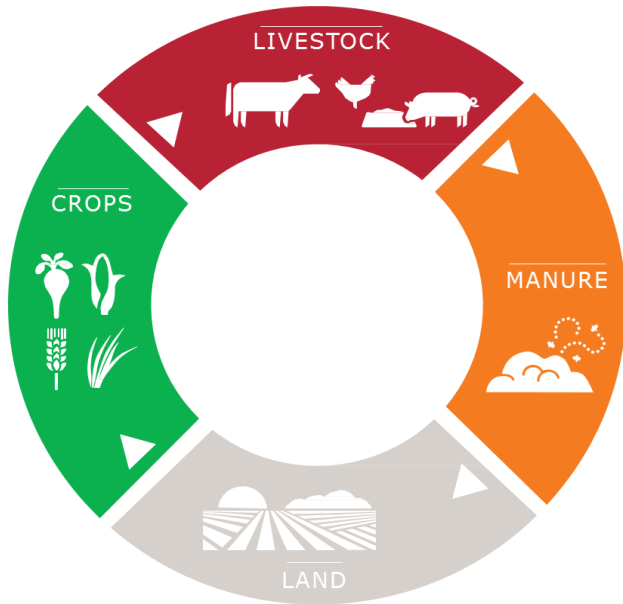
PANEL DISCUSSION 01



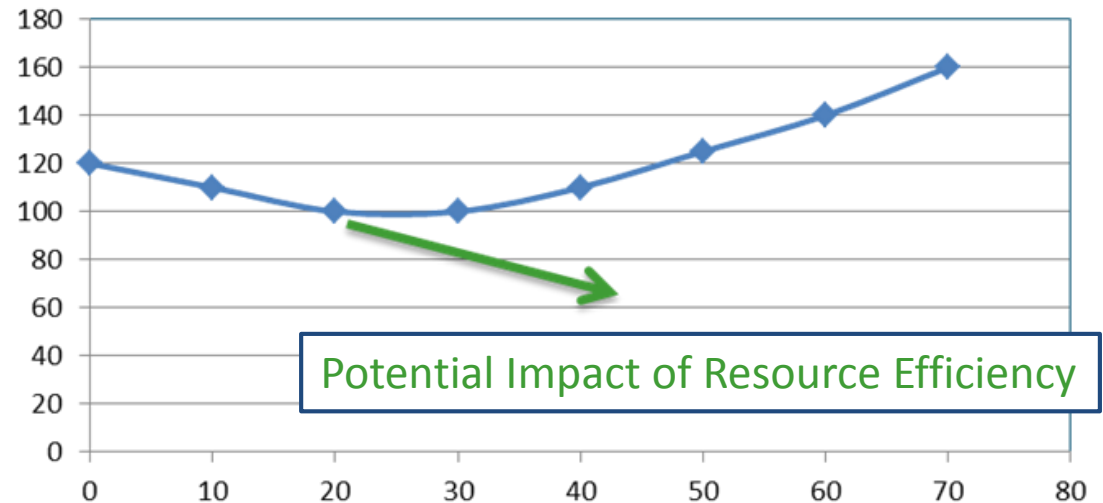
A sustainable Bioeconomy needs Animals



Maximum production of human edible proteins per hectare of land without depletion of productivity and biodiversity



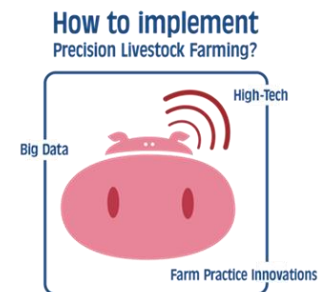
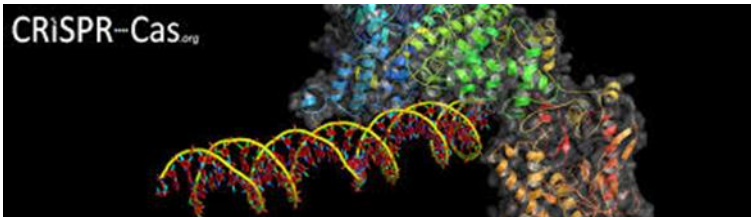
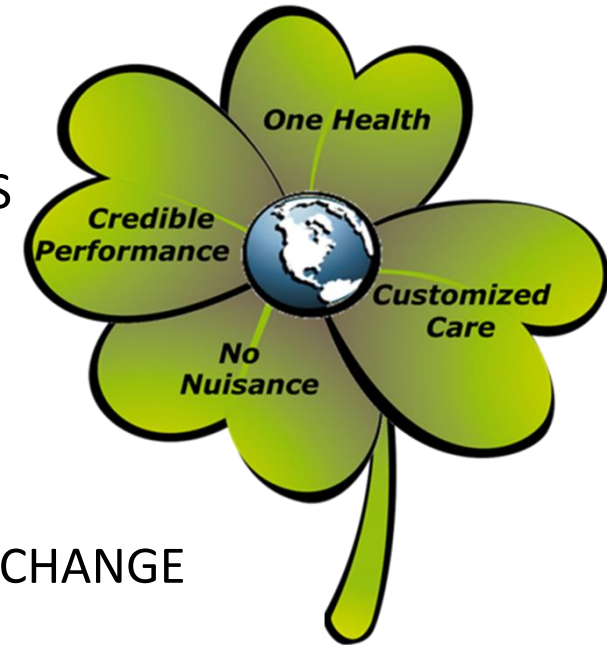
Land Use (ha/HEP) vs % AP in Diet



Animal Production will be Reframed

GAMECHANGERS DRIVING A TRANSITION

- TRUST IN FOOD(PRODUCTION) LEADS CONSUMERS
- DISRUPTIVE INNOVATIONS IN AGRIBUSINESS
- FUTURE FARMERS: EDUCATED ENTREPRENEURS
- CARE FOR LAND, SOILS AND RESOURCES; CLIMATE CHANGE
- DISRUPTIVE TECHNOLOGIES: ADAPTIVE & EFFICIENT CLIMATE SMART FOOD PRODUCTION



Animal Products die out in Bioeconomy

